



TANAPA Tourism SPLASH

ISO: 9001:2015

ISSUE: No. 2 JANUARY TO MARCH 2026

SEASON OF LIFE

Wildebeest Calving in the
Southern Serengeti

THE WORLD WILL NOT BE THE SAME

A tribute to Dr. Jane Goodall, the
Founder of the Jane Goodall Institute
and a UN Messenger of Peace

BEYOND WILDLIFE:

How TANAPA is defining
Tanzania's Cultural Future



Weaver Birds

Masters of Love, Knots and Nests

THE SEASON IS HERE

#calvingseasoninserengeti

- This late January 2026
- To March 2026



World's Leading National Park 2025
Africa's Leading National Park 2025

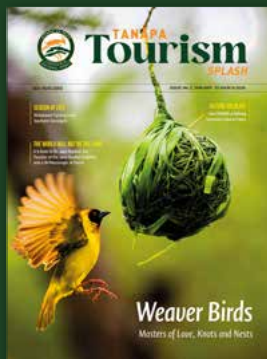
Editor-in-Chief
CPA Musa N. K. Juma

Editor
Jully Bede Lyimo

Assistant Editors
Stephen Moshy
Herman Baltazari Mtei
Evance Elias Magomba
David Amnaay Maige
Fred Bilas Shirima
Agnes Alfred Lwinga
Baraka Venant Serapion

Layout & Graphics Design
Jane J. Kifaluka

Published by
Tanzania National Parks
TANAPA Building
Dodoma Road
P. O. Box 3134, Postcode 23106
Arusha - Tanzania



Published by
© Tanzania National Parks
Issue No 2, January-March 2026



What to do



Pay for your tour



Directional Map



Brochures



Wild at your fingertips

TABLE OF CONTENTS

06

**A Message from
Conservation Commissioner**

07

**A Message from the
Deputy Conservation Commissioner**

09

**A Message from
Assistant Conservation Commissioner**

10

**Love, Knots and Nesting:
The Masterful Craft of Weaver Birds**

14

**Kitulo National Park:
A rare Gem in the Southern Highlands of
Tanzania, Waiting to be Explored**

16

**Season of Life:
Wildebeest Calving in the Southern
Serengeti**

18

**TANAPA Earns Global Recognition
As a Centre of Excellence in Service
Delivery**

19

**Serengeti Supreme
Africa's Crown Jewel of the Wild Reigns
the World**

20

**Three Global Awards, One Nation:
Dr. Samia Receives Tanzania's 2025
Tourism Prizes**

24

**The world will not be the same
A tribute to Dr. Jane Goodall, the Founder
of the Jane Goodall Institute and a UN
Messenger of Peace**

26

**TANAPA's Digital Leap Makes National
Parks Easy to Access**

30

**Beyond Wildlife:
How TANAPA is defining Tanzania's
Cultural Future**



34

Where Nature Wins!
TANAPA's Journey to World Travel Awards
Success

42

Discover Maji Moto:
Nature's Healing Hot Spa in Ruaha
National Park, Tanzania

46

Safari Quest:
Word Cross Puzzle

38

Mahale Mountains National Park:
A Hidden Eden of Chimpanzees, Mountains
& Untouched Wilderness

44

A Landscape:
With Its Own Signature

47

Kids at Wild:
Eagle's Fairy Tale





A Message from **Conservation Commissioner** Tanzania National Parks (TANAPA)

Dear Readers and Friends of Tanzania National Parks,

As the New Year 2026 unfolds, I extend my heartfelt wishes to you all for a prosperous and fulfilling year ahead. It is with great pleasure that I welcome you to the Second Edition of the TANAPA Tourism Splash Magazine, an inspiring invitation to explore the remarkable diversity, beauty and heritage of Tanzania national parks. May this year bring renewed commitment, innovation and success in our shared mission of conservation and sustainable tourism development.

We stand at a pivotal moment for Tanzania's tourism industry. The Government of the United Republic of Tanzania, under the visionary leadership of Her Excellency President Dr. Samia Suluhu Hassan, has set an ambitious target of attracting eight million tourists by the year 2030. Achieving this milestone will require strategic planning, strong partnerships and a shared sense of responsibility across the entire tourism value chain.

The continued growth and transformation of the tourism industry remain a national priority, as articulated in the ruling Chama cha Mapinduzi (CCM) Election Manifesto. This commitment underscores the importance of increasing visitor numbers, enhancing tourism revenue and ensuring inclusive participation across society. Tourism remains a powerful catalyst for job creation, entrepreneurship and empowerment particularly for women and youth. In parallel, TANAPA's initiatives support the broader aspirations of Tanzania Development Vision 2050, which envisions a resilient, inclusive and sustainable economy anchored in responsible natural resource management and value-driven tourism. By safeguarding our protected areas and promoting high-quality tourism products, TANAPA contributes directly to the realization of this long-term national vision.

I am particularly pleased that our longstanding commitment to excellence is yielding tangible results. It is fitting to highlight Serengeti National Park's global recognition as the World's Leading National Park at the World Travel Awards 2025. This prestigious honor reflects not only Serengeti's unparalleled biodiversity, vast open landscapes and enduring natural heritage, but also the collective conservation efforts that define Tanzania National Parks. In the same spirit of excellence, TANAPA has also received the Quality Achievement Award 2025 – Gold Category, a global recognition celebrating excellence in the best tourism service, leadership and conservation management provided by the European Society for Quality Research (ESQR) for the seventh consecutive time, reaffirming our consistent standards in conservation management, service delivery and institutional performance. Within these pages, readers will find stories and insights that echo these achievements celebrating the excellence, diversity and experiences that continue to position our national parks as destinations of global distinction and inspire visitors from around the world.

These accolades are a testament to our collective efforts and strong partnerships, as we celebrate the progress made, I encourage you to be part of a shared journey towards sustainable tourism that benefits people, nature and the economy of Tanzania. Together, let us move forward with renewed energy and unity to strengthen the role of Tanzania National Parks as pillars of conservation excellence and tourism growth and to achieve even greater milestones in the year ahead.

Musa N. K. Juma
Conservation Commissioner



A Message from the **Deputy Conservation Commissioner** Tanzania National Parks (TANAPA)

Dear Readers and Partners of Tanzania National Parks,

Warm New Year greetings from Tanzania National Parks (TANAPA)! I am delighted to connect with you through this edition of Tourism Splash, a publication that celebrates the extraordinary beauty, diversity and heritage of Tanzania. This edition reflects a year of renewed purpose, highlighting the strides TANAPA has made in strengthening conservation efforts while advancing tourism development. It is an invitation to travelers, partners and stakeholders to join us on a journey where excellence in tourism meets leadership in conservation.

Innovation continues to shape how we protect and share Tanzania's natural treasures. From enhancing conservation operations to elevating visitor experiences, we are embracing cutting-edge technologies that transform the way we manage our protected areas. The TANAPA Go App exemplifies this approach, offering a seamless digital companion for planning adventures, booking entries and accessing real-time updates. Flip through these pages to discover how the app connects travelers to the heart of Tanzania's landscapes, making every visit both effortless and unforgettable.

Beyond wildlife, TANAPA proudly safeguards some of the country's most significant cultural heritage sites,

places that tell the story of Tanzania's journey from early human evolution to the emergence of a modern, independent nation. These treasures, together with our natural wonders, position Tanzania as a cradle of history, identity, resilience and innovation. By preserving and sharing this heritage, we offer visitors a deeper, more meaningful experience of the country's remarkable story.

This edition of Tourism Splash opens the door to inspiration and adventure. Within these pages, you will discover stories that ignite a sense of adventure, insights that showcase our accomplishments and features highlighting initiatives shaping the future of tourism and conservation. We hope this collection motivates you to explore, support and immerse yourself in Tanzania's rich natural and cultural heritage. Together, let us continue to promote responsible tourism, protect our treasures and celebrate the sustainable growth of our remarkable national parks.

Massana G. Mwishawa
Deputy Conservation Commissioner



Rediscovering Tanzania:

Where Culture Complements Nature

Often overshadowed by its iconic wildlife safaris, towering mountains and pristine beaches, Tanzania holds a quieter yet deeply compelling beauty that many visitors overlook. Beyond the savannahs and horizons lies a rich tapestry of cultural heritage ancient stone tools that whisper of early human ingenuity, historic structures that mark defining moments, resistance sites that speak of courage and living homesteads that preserve traditions passed down through generations.

Tanzania National Parks (TANAPA) invites stakeholders, travelers and partners to look beyond the familiar and embrace cultural tourism as a powerful complement to wildlife experiences. By celebrating and promoting these cultural heritage sites, we diversify Tanzania's tourism offering while safeguarding the identity, history and values that shape our nation. This is an invitation to the world to journey not only through landscapes of breathtaking nature, but also through places where human history was forged, celebrated and entrusted to future generations.





A Message from **Assistant Conservation Commissioner** Business Development

Dear Readers of the TANAPA Tourism Splash,

Season's greetings and a vibrant welcome to the New Year 2026!

As we step into a fresh chapter filled with adventure and possibility, I am excited to welcome you to the Second Edition of the TANAPA Tourism Splash Magazine your gateway to the adventures, stories and experiences that make Tanzania's national parks truly unforgettable.

Tourism Splash is more than a magazine; it is your companion on a journey of discovery, adventure and wonder. Within these pages, you are invited to uncover new destinations, revisit familiar favorites and experience the magic that unfolds across Tanzania's protected areas through every season. Whether planning your next journey, seeking inspiration, or celebrating the natural beauty that surrounds us, this edition is thoughtfully curated to fuel your passion for travel.

Each season brings a new chapter in Tanzania's tourism story and this edition highlights the milestones that shape it. From key events, festivals and exhibitions to international showcases, these pages capture the energy of a tourism sector that continues to innovate, inspire and connect Tanzania with the world. Domestic campaigns encourage local exploration, while global expos open doors to new markets together reflecting a nation committed to authentic, sustainable and forward-looking tourism.

In this edition, we take you closer to the stories that define Tanzania's conservation and tourism legacy. Step into the remarkable world of primates with the story of Gombe, celebrating the groundbreaking work of the late Dr. Jane Goodall, whose research transformed global understanding of chimpanzees and continues to inspire conservation worldwide. Discover hidden paradises and untouched wilderness, where every corner holds a story waiting to be told. Young readers are not left behind, our dedicated Kids' Corner brings wildlife tales to life, nurturing curiosity and imagination. Each page promises inspiration, adventure and the thrill of discovery, inviting you to explore and experience the wonders that await.

As you journey through this edition, may the stories within awaken your sense of wonder, inspire new adventures and reconnect you with cherished memories. You are warmly invited to experience Tanzania's natural and cultural treasures firsthand, where every trail whispers a story and every moment becomes a memory to treasure.

Jully Bede Lyimo
Assistant Conservation Commissioner





LOVE, KNOTS AND NESTING: THE MASTERFUL CRAFT OF WEAVER BIRDS

By David Amnaay Maige

In the shimmering heat of African savannas and the quiet canopies of Asian woodlands, tiny artisans work with astonishing precision. Suspended from branches are delicate baskets, woven globes, and graceful pods each swaying as if displaying its craftsmanship to the world. These are the creations of weaver birds, small yet remarkably skilled avian builders whose nests are masterpieces of instinct, engineering and artistry. For them,

weaving is not just survival it is courtship, competition and the ultimate demonstration of mastery.

Mastery Begins With a Single Knot

For a male weaver bird, the construction of a nest begins with one simple act: tying a single blade of grass around a supporting twig. This anchoring knot is the first

stroke of an intricate project. From there, the bird works methodically looping, threading and cinching hundreds of fibers with his beak. Each strand is placed with intention, creating a tightly woven frame that gradually expands into a functional, aerodynamic structure.

Where many birds create modest bowls of twigs, weavers go far beyond. Their nests may take the shape of globes, hanging baskets, or

elongated chambers with narrow, tube-like entrances designed to deter predators. Some species reinforce their walls, create internal compartments, or even weave ventilation gaps that regulate airflow. The result is a structure so meticulously crafted that engineers and architects often study them for inspiration.

What makes this skill even more remarkable is that no adult teaches a young male how to build. Instinct provides the blueprint, but practice sharpens the craft. Early attempts may sag or loosen, but with repetition, each male learns to adjust tension, balance weight, and shape the perfect curve. By the time he reaches maturity, he can weave thousands of fibers into a home that is strong, secure and beautiful a true testament to his mastery.

Craftsmanship as Courtship

In the world of weaver birds, craftsmanship is the language of love. A male's nest is his calling card, his audition and his declaration of fitness. When a female inspects his work, she evaluates every element with discerning attention: the firmness of the knots, the smoothness of the chamber, the symmetry of the walls and the quality of the materials. If the nest falls short of her high standards, she moves on without hesitation.

Some females even dismantle poorly constructed nests on the spot, sending a clear message that only excellence will do. This rigorous selection process has shaped an evolutionary tradition of ever-improving craft. Over countless generations, males have been driven to innovate building multiple nests, refining their methods and competing fiercely for approval. It is not unusual for a male to weave four, five, or even more nests before one is finally accepted.

Yet this courtship ritual is not just about beauty. A well-made nest protects vulnerable eggs and chicks from rain, heat, snakes and predatory birds. In this world, mastery is practical. A nest must withstand storms, shield from temperature extremes and hold firm against the wind. The more skillfully it is made, the safer the next generation will be.



Life in a Woven World

While many weavers build solitary nests, others construct astonishing communal structures. The sociable weaver of southern Africa is especially extraordinary, weaving enormous colonies that resemble giant thatched roofs. These multi-family complexes can weigh more than a ton and contain a labyrinth of chambers used for breeding, sleeping and regulating temperature.



Inside these woven fortresses, life is lively and collaborative. Dozens or even hundreds of birds share maintenance duties, repairing worn areas and adding fresh fibers. The interior remains cool under the scorching sun during the day, yet retains warmth on cold desert nights. Over decades, these structures grow into living architecture homes that host not only weaver birds but also insects, lizards, and small mammals seeking shelter.

More Than Builders

Weaver birds shape their ecosystems in subtle but important ways. Their diet of insects and seeds supports plant diversity and helps control pests. As old nests decay, they enrich the soil, while abandoned ones become ready-made homes for other species, extending their impact far beyond their own needs.

Scientists also admire their adaptability. Weaver birds adjust their techniques and materials based on weather patterns, resource availability and threats. In changing landscapes, some now weave nests on fences, rooftops, or utility poles proof of their resilience and ingenuity.

A Final Look at Mastery and Meaning

To watch a weaver bird at work is to witness mastery in motion. Each movement knot, loop and placed fiber tells a story shaped by instinct, persistence and innovation. Their nests sway in the breeze not only as shelters but as declarations of skill, symbols of resilience and testaments to the power of craft.

In a world where the smallest marvels often go unseen, the weaver bird stands as a quiet reminder: true mastery can exist in the tiniest of forms and even the simplest materials grass, leaves and twigs can be transformed into works of art when guided by patience and purpose.





Wild at your fingertips



We are now digital leaving the paper trail behind
Download the **TANAPA Go App** Today!



KITULO NATIONAL PARK

A RARE GEM IN THE SOUTHERN HIGHLANDS OF TANZANIA, WAITING TO BE EXPLORED



By Susan Joseph Tesha

High on the southern highlands of Tanzania lies a place that feels almost unreal. Kitulo National Park is a vast sweep of rolling grasslands that surge into color every year. When you arrive, the first thing that strikes you is how green and open everything feels when you visit in the wet season from November to April every year. Then the flowers begin to reveal themselves. Geraniums, terrestrial orchids, asters and many more species spread across the plains since the flowers are usually short mostly elevating up to 10cm from the ground. It is a landscape that seems designed to slow your heartbeat and lift your spirits, a perfect escape from the constant buzz of the urban life.

The air in Kitulo has its own character, fresh, light, clean and in some pockets of the grasslands you will catch the soft, sweet aroma of one of its most special flowers. The

Disa fragrans orchid grows naturally across the plateau and the scent it releases carries through the breeze like a natural air freshener, usually spotted in the fields during March. This simple detail makes the entire park feel alive in a gentle and intimate way.

Kitulo is loved by hikers and nature enthusiasts who come for its temperate like weather, wide open trails and the feeling of freedom that comes with walking through fields that stretch out towards the horizon. For many travelers it is the perfect stop after a traditional safari in Ruaha, Katavi or any other national park in the southern circuit. After days of wildlife viewing, Kitulo gives visitors a refreshing change of pace. Here you explore on foot, breathe deeply and rediscover calm unlike other parks with more wildlife

For those with time to stay, the park offers both accommodation facilities and camping areas. Spending a night in Kitulo is a special experience. The skies above the plateau are dark and clear which makes the stars appear brighter than you would ever expect. Staring upward at a sky filled with countless stars is both peaceful and humbling. It is the kind of night that stays with you long after you have left.

Reaching Kitulo is straightforward. Travelers coming by road can turn off the Mbeya Tunduma highway at Chimala and drive 23 km to the park gate or arrive through Songwe Airport then continue by road via the Isyonje junction which is about 65 km to the park. The journey is part of the adventure as you pass through the cool highland landscapes that define the Southern part of Tanzania.

The park is known for its dramatic seasonal changes. The flowers bloom from November to April creating the famous carpet of color that has made Kitulo world renowned. Outside of the flowering season the grasslands turn golden brown but remain equally captivating in a quieter and more serene way. Waterfalls

flow throughout the year offering beautiful spots to relax and take in the scenery. Kitulo is also a haven for bird lovers because it is one of the few places in the country where you can spot migratory wild birds as they pass through. It is also home to wildlife such as Zebras, Impalas, reedbucks, bush duikers and Abbot's duiker. The park is also home to a rare primate known as the *Rungwecebus Kipunji*, a shy newly discovered primate in the Livingstone Forest within the park. Other primates include white and black colobus monkey, blue monkey and vervet monkey.

Whether you are a hiker, a photographer, a plant lover, a traveler searching for peace or someone exploring the beauty of the southern highlands, Kitulo welcomes you with open arms. The beauty here does not shout. It whispers. It invites you to slow down, breathe and truly see the world around you. Come experience Kitulo. The wilderness filled with fresh and natural air dotted with spectacular flowers are awaiting! This natural garden is one of Tanzania's quiet treasures and it is ready to be discovered.





SEASON OF LIFE

WILDEBEEST CALVING IN THE SOUTHERN SERENGETI

By Fred Bilas Shirima

Serengeti National Park is full of wonders. Each year between January and March something extraordinary unfolds on the sweeping southern plains of the Serengeti. The land turns green, fresh rains awaken the grasses and the sky seems to buzz with energy. It's calving season- a breathtaking moment in nature where over half a million wildebeest give birth within just a few weeks, turning the plains into the world's wildest nursery.

The southern Serengeti, especially the Ndutu area and surrounding short -grass plains, becomes the heart of life. Wildebeest mothers instinctively return here year after year, drawn by the rich, mineral-filled grasses that are perfect for nourishing both themselves and their newborns. This isn't just any birthing event-it's synchronized, precise and beautifully chaotic.



Thousands of calves are born every single day during the peak, often within minutes of one another. In fact, nearly calves can be born in a single 24-hour stretch.

The Perfect Timing? Nature has its reasons. Calving en Masse overwhelms predators like lions, hyenas, and cheetahs. While some calves fall prey, the sheer numbers ensure most survive. It's nature's strategy of survival through unity. Within minutes of birth, these wobbly -legged newborns are standing, walking and even running-because out here, standing still can mean danger.

Visitors lucky enough to witness this event are often left in awe. There's something incredibly moving about seeing new life take its first steps under the vast African Sky, surrounded by thunder of hooves and the cries of doting mothers.

It is not just a spectacle! It is a symbol of resilience, of the raw beauty of the wild, and of the delicate balance that defines the Serengeti Ecosystem.

For photographers, this is paradise. From dramatic predator -prey interactions to tender moments between a calf and its mother, the opportunities to capture pure, untamed emotion are endless. For nature lovers, it is an emotional experience-watching life begin in the middle of nowhere, where survival is both fragile and fierce.

So, if you ever dream of witnessing Africa in its most honest and powerful form, plan your visit to Serengeti between January and March. Come for the wildlife, stay for the wonder and leave with memories that will last a lifetime.



TANAPA EARNS GLOBAL RECOGNITION AS A CENTRE OF EXCELLENCE IN SERVICE DELIVERY

By *Jully Bede Lyimo*

Beneath the glittering chandeliers of Dubai's Dusit Thani Hotel, Tanzania's vast wilderness took center stage not through sweeping drone footage of the Serengeti or postcard sunsets over baobab-dotted plains, but through something less visible and arguably more powerful: operational excellence.

On December 9, 2025, at the 2025 Quality Achievements Conference in Dubai, Tanzania National Parks (TANAPA) was awarded the 2025 International Award for Best Service Provision by the European Society for Quality Research (ESQR). Selected from 49 institutions across 41 countries, TANAPA extended an impressive seven-year winning streak a rare feat that positions the agency as a global benchmark in tourism service delivery.

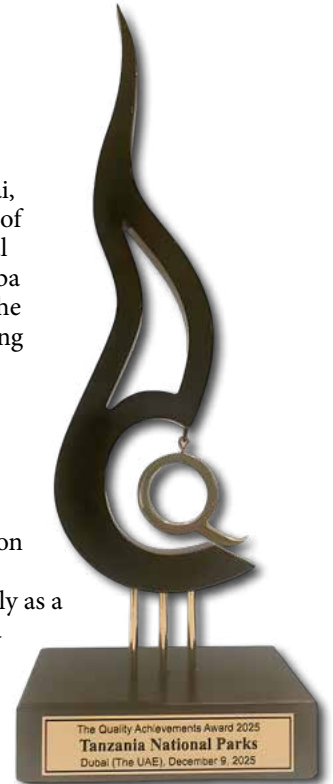
For travelers, the recognition simply confirms what many already sense at sunrise on the savannah: Tanzania's parks are not only among the world's most spectacular, they are meticulously run. Entry procedures are seamless, ranger operations are coordinated with precision, and conservation policies are driven by data as much as by devotion to heritage. The result is an experience that feels effortless to visitors while resting on rigorous systems behind the scenes.

ESQR attributed TANAPA's continued success to its deep-rooted culture of professionalism, accountability and innovation, anchored in the ISO 9001:2015 Quality Management System. But beyond certification, quality here functions as a philosophy shaping everything from wildlife protection strategies to visitor engagement and infrastructure planning.

Addressing delegates in Dubai, Deputy Permanent Secretary of Tanzania's Ministry of Natural Resources and Tourism, Nkoba Eliezer Mabula, highlighted the agency's consistency in meeting international standards while elevating the country's global tourism standing. He also credited President Samia Suluhu Hassan, whose Royal Tour initiative has brought renewed international attention to Tanzania's destinations, reframing the country not only as a bucket-list safari icon but as a sophisticated, sustainability-driven tourism leader.

At a time when modern travelers are increasingly drawn to destinations that balance luxury with responsibility, Tanzania's national parks offer a compelling blueprint. Here, conservation and comfort coexist; wild landscapes are protected with scientific rigor, even as they welcome millions seeking transformative journeys.

The Dubai accolade underscores a broader truth: in Tanzania, the magic of the wild is matched by the mastery of its management and that combination is earning admiration far beyond Africa's plains.



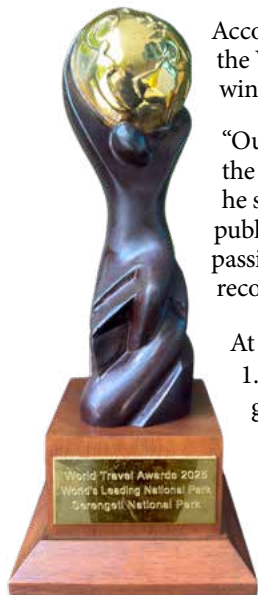


SERENGETI SUPREME AFRICA'S CROWN JEWEL OF THE WILD REIGNS THE WORLD

By Agnes Alfred Lwinda

In December 2025, the World Travel Awards crowned Serengeti National Park the World's Leading National Park, placing Tanzania's iconic wilderness above global legends such as Kruger and Yellowstone.

The title followed a rigorous year-long vote by travel experts and travelers worldwide, recognizing not popularity, but enduring excellence in conservation and visitor experience.



According to Graham Cooke, Founder of the World Travel Awards, this year's winners reflect both resilience and vision.

"Our winners represent the very best of the world's tourism and travel industry," he said, noting that a record number of public votes signals an undiminished global passion for travel as the sector continues its recovery.

At its heart is the Great Migration over 1.5 million wildebeest, with zebra and gazelle, moving in an ancient rhythm across vast plains. Yet the Serengeti's magic extends beyond spectacle.

"The Serengeti speaks for itself and with good reason," says Tanzania National Parks (TANAPA) Conservation Commissioner, CPA (T) Musa Nassoro Kuji. "Beyond the famous migration, there is a unique landscape and an extraordinary diversity of wildlife that makes this place exceptional throughout the year."

Golden savannahs, granite kopjes, star-filled skies and abundant wildlife define a landscape alive year-round.

Gazetted in 1951 and a UNESCO World Heritage Site, the Serengeti reflects decades of careful stewardship where conservation and high-end safari travel coexist.

More than an award, this honor affirms a promise the Serengeti continues to keep timeless, untamed and unmatched.





THREE GLOBAL AWARDS, ONE NATION

DR. SAMIA RECEIVES TANZANIA'S 2025 TOURISM PRIZES

By *Jully Bede Lyimo*

President Samia Suluhu Hassan has received three major international tourism awards won by Tanzania at the prestigious 2025 World Travel Awards, marking another significant milestone in the country's steadily rising global tourism profile.

The awards were presented to the Head of State during a ceremony held at the Ungu State House in Zanzibar by the Minister for Natural Resources and Tourism, Dr. Ashatu Kijaji, symbolizing national recognition of achievements earned on the international stage.

Among the accolades, the most prestigious was World's Leading Safari Destination 2025, conferred at the World Travel Awards Grand Finals held in the Kingdom of Bahrain on December 6, 2025.

This honor is widely regarded as one of the highest distinctions in global tourism, particularly within wildlife and nature-based travel.

Tanzania's victory followed stiff competition from Africa's most established safari destinations, including Botswana, Kenya, Namibia, South Africa, Uganda, Zambia and Zimbabwe.



Winning against such formidable contenders underscores Tanzania's enduring appeal, authenticity and depth of wildlife experiences, from the Great Migration to vast, unspoiled ecosystems.

Further cementing Tanzania's reputation as a global conservation leader, Serengeti National Park was named World's Leading National Park 2025.

The iconic park emerged ahead of internationally renowned protected areas such as South Africa's Kruger National Park and the Yellowstone National Park of the United States.

This recognition reflects decades of conservation commitment and careful stewardship, as well as the Serengeti's unmatched biodiversity, expansive savannahs and dramatic predator-prey interactions that continue to captivate travelers, filmmakers and scientists alike.

In addition, Tanzania claimed the title of Africa's Leading Destination 2025 during the World Travel Awards Africa and Indian Ocean Gala Ceremony, held on June 28, 2025 in Dar es Salaam.

The award followed competition with several top tourism destinations across the African continent, highlighting Tanzania's ability to offer a diverse portfolio of experiences ranging from wildlife safaris and mountain trekking to beach holidays, cultural tourism and heritage exploration.

This continental recognition signals growing confidence among travelers and industry stakeholders in Tanzania's tourism brand.

In another notable achievement, Zanzibar was recognized as Africa's Best Corporate Retreat Destination in December 2025.

This award reflects the archipelago's evolving tourism identity, expanding beyond leisure and honeymoon travel into meetings, incentives, conferences and wellness retreats.

With its blend of historical charm, modern hospitality infrastructure, and tranquil coastal settings, Zanzibar is increasingly positioning itself as a preferred destination for high-end corporate and incentive travel.

Receiving the awards, President Samia commended institutions and professionals in the tourism and conservation sectors for safeguarding the nation's attractions and enhancing Tanzania's international standing.



Her remarks highlighted the collective effort behind these achievements, from park authorities and tour operators to conservationists and local communities who play a critical role in preserving natural and cultural heritage.

She noted that the accolades reflect Tanzania's rich natural endowment, sustained conservation efforts and strategic promotion of tourism products underpinned by stability and peace.

"The country's diverse landscape, abundant wildlife, water bodies, and peaceful and hospitable people continue to attract visitors worldwide," the President stated.

Her message reaffirmed Tanzania's position as one of the world's most compelling travel destinations and signaled a strong foundation for continued growth in sustainable and high-value tourism.

TANZANIA

National Parks

“A world of unrivalled wildlife and nature”



Tanzania proudly boasts of 21 National Parks that have vast potentials as tourism destinations. While visiting the parks, visitors are privileged to enjoy exceptional wildlife tourism products including incomparable and unique day game viewing, night game drives, bush lunch and dinner, picnicking, walking safaris, bird watching, sports fishing, mountain hiking and climbing, chimpanzee trekking, canoeing, balloon safaris, horse riding, kayaking, Mawenzi Technical Climbing, biking and paragliding.

Interestingly each park is unique from the other. Arrays of spectacular biodiversity and scenery views of each park make a visitor forget the rest and decide for a longer stay or plan to visit again. Today Wilderness taste, solitude and enjoyment are what your heart and brain deserves.



Email: info@tanzaniaparks.go.tz or cc@tanzaniaparks.go.tz

Facebook: Tanzania National Parks

Twitter: @tzparks, Instagram: @tanzaniaparks

Website: www.tanzaniaparks.go.tz





The National Parks of Tanzania the uncompromised natural splendors provide an excellent amazing experience combining all natural values one can think of. The first safari one makes to any park is and will be different with the second safari to the same or another park-it is hard to match. **Once you visit, you know.** When it comes to adventure safaris clearly Tanzania National Parks means your best choice again and again.

These spectacular national parks are Arusha, Burigi-Chato, Gombe, Ibanda-Kyerwa, Katavi, Kilimanjaro, Kitulo, Lake Manyara, Mahale Mountains, Mikumi, Mkomazi, Nyerere, Ruaha, Rubondo Island, Rumanyika-Karagwe, Saadani, Saanane Island, Serengeti, Tarangire, Udzungwa Mountains and Ugala River.

Please scan and download
TANAPA Go App





The world will not be the same: A tribute to **DR. JANE GOODALL** the Founder of the Jane Goodall Institute and a UN Messenger of Peace



Dr. Deus Mjundu
Director of Gombe Stream
Research Centre, the Jane
Goodall Institute

On the morning of October 1, 2025, the world awoke with the saddest news of the death of Dr. Jane Goodall. For over six decades, Dr. Goodall, has been a global symbol of peace, compassion and hope. Her work on chimpanzees and her message inspired many people around the globe and taught us the unique role humanity has to play in nature.

Dr. Jane Goodall's meticulous and yet simple way of studying our closest living relatives, chimpanzees, paved the way for many researchers that followed. Moving around the forest with only a pair of binoculars and a notebook, Dr. Jane Goodall made groundbreaking discoveries, including making and using of tools by chimpanzees. Before this, it was thought that human was the only creature who could make a tool. This discovery challenged the very definition of human

being who by then was defined as "man the tool maker". Her discoveries also led to the upgrading of Gombe Stream Game Reserve to the status of the National Park back in 1968 and, in 1978, for the first time the park opened for tourism. Unlike in many places, tourists at Gombe arrive not only to wonder at the chimpanzees but also to marvel on their different personalities, made famous by Dr. Jane Goodall in her long-term study which is now in its 66th years.

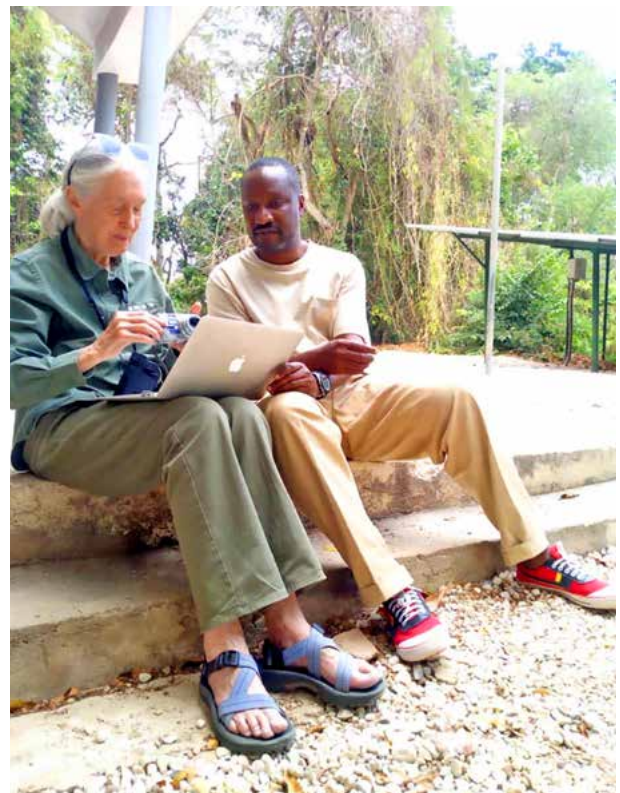




In early 1990s while flying over Gombe, Dr. Jane Goodall realized that it will be difficult to protect Gombe chimpanzees if people surrounding this pristine forest continued to live in poverty. In 1994 she initiated the Lake Tanganyika Catchment Reforestation and Education (TACARE) program. This programmed aimed at improving the lives of people while restoring the biodiversity. Overtime, the program has been able to restore degraded forests around Gombe NP and empower local communities to improve their livelihood, while making informed decisions on conserving their environment. Three years before the inception of TACARE, in 1991, while at her house in Dar es salaam with 12 young Tanzanians, Dr Jane Goodall established a youth environmental program called Roots and Shoots. Now in over 75 countries, Roots and Shoots empower youth for positive change in communities, animals and environment.

Dr. Jane Goodall's unwavering commitment to Tanzania, earned her a number of awards in the country including, the Tanzanian Kilimanjaro Medal (1996), an Honorary Degree at The Open University of Tanzania (2006), a Special Award presented by the Ministry of Natural Resources and Tourism, Tanzania National Parks in recognition of her outstanding work in the conservation of Chimpanzees (2017), a Lifetime Achievement Award by TAWIRI (2019) and even after her death was honored with a Distinguished Award by TAWIRI (Presented at the 15th Tawiri International Scientific Conference, 2025).

I personally came to know Dr. Jane Goodall for the first when we had a Gombe reunion in Minnesota in 2004. Since then, I have been working closely her. With passing away of Dr Jane Goodall, the country of Tanzania, as well as the entire Global community have lost a remarkable person who worked tirelessly throughout her life to raise awareness about threats to wildlife, promoted conservation and inspired a more harmonious, sustainable relationship between people, animals and the natural world. The world will miss her.





TANAPA'S Digital Leap Makes National Parks Easy to Access

By Agnes Alfred Lwinda

Under the open skies of Mikumi National Park, with wildlife roaming nearby and traditional rhythms carrying across the savannah, Tanzania on October 8, 2025 launched a new tourism app designed to streamline information of its famed national parks for a global audience.

Dubbed, TANAPA Go Tourism App, invented by Tanzania National Parks (TANAPA), marks a significant step in the country's push to blend tourism, conservation and digital innovation.



The app allows users to browse official information for all 21 Tanzanian national parks, explore attractions and activities, access park fees and guidelines, navigate geo-enabled maps and receive real-time alerts and safety updates.

It also enables secure digital payments for selected park services and allows maps and brochures to be downloaded for offline use.

The launch took place in one of Tanzania's most accessible parks, a symbolic choice for a platform aimed at making safari planning simpler, faster and more transparent.

Dr. Hassan Abbas, Permanent Secretary at the Ministry of Natural Resources and Tourism, officially inaugurated the app in the presence of key government officials, tourism stakeholders, technology partners and media representatives.

Members of the TANAPA Board of Trustees also attended, led by chairman General (rtd) George Marwa Waitara, alongside board members Khadija Ramadhani and Athuman Kwariko.

Speaking at the event, Dr. Abbas said digital tools were now essential for countries competing for global tourism flows.

"There are eight billion people globally, more than five billion of whom use mobile phones and 87 percent use smartphones," Dr. Abbas said, adding;

"This app arrives at the right time to increase global visibility for our national parks and simplify access to reliable information and tourism services worldwide."

Smartphones were quickly raised among guests as they tested the platform, which TANAPA says is designed to put the safari experience "in the palm of the hand" of modern travellers.

General Waitara said the platform reflected a broader shift in how the country manages and presents its natural heritage.





“Nothing is impossible when we dare to innovate,” he said, adding that: *“TANAPA Go proves our commitment to improving operational performance and delivering fast, reliable services to visitors from home and abroad.”*

Beyond visitor convenience, officials say the app will strengthen communication between park authorities and tourists, support responsible tourism and enhance Tanzania’s competitiveness in Africa’s growing eco-tourism market.

The launch also coincided with the formal rolling out of **Tourism Splash Magazine – Issue No. 1**, a new TANAPA publication aimed at promoting tourism services, products and branding for the country’s national parks.



By choosing Mikumi – a park that receives large numbers of domestic and international visitors each year – TANAPA sought to underline a clear message: future tourism experiences must be seamless, smart and immersive.

TANAPA said future updates to the app are expected to include digital park entry and ticketing, multilingual support, expanded wildlife education content and virtual experiences. For Tanzania, whose parks are central to its tourism economy, the move signals a drive to ensure that the journey into the wild now begins long before visitors reach the park gate – starting instead with a tap on a screen.





BEYOND WILDLIFE

How TANAPA is defining Tanzania's Cultural Future A Story Hidden Beyond the Animals



By Neema Pendeza Mbwana

When Tanzania is mentioned, the mind often travels first to sweeping savannahs, roaming elephants and the thunder of wildebeest hooves.

Yet beyond this celebrated wildlife narrative lies another equally powerful story one etched in stone tools, historic buildings, resistance strongholds and modest homes that shaped a nation.

Tanzania National Parks (TANAPA) manages some of the country's most significant cultural heritage sites, places that narrate Tanzania's journey from early human evolution to the birth of a modern and independent nation.

These sites complement wildlife tourism by positioning Tanzania not only as a land of natural wonders, but also as a cradle of human history, identity, resilience and innovation.

To start with, I would like to introduce the five cultural heritage sites under TANAPA's stewardship: Isimila Stone Age Site (Iringa), Dr. Livingstone Museum

(Kigoma), Caravan Serai Slave Trade Museum (Bagamoyo), Mkwawa Museum (Kalenga), and the Nyerere Memorial House (Dar es Salaam).

Why These Places Matter to Tanzania's Story

Cultural heritage tells Tanzania's story across generations and eras. It speaks of:

- Early human evolution and technological innovation;
- Encounters with explorers and global exchange;
- The East African slave trade and its lasting impact;
- Resistance, leadership and colonial encounters; and
- The rise of nationalism and the road to independence.

Across TANAPA's five cultural sites, these themes come alive transforming history into lived experience and making the sites invaluable learning spaces for students, researchers, communities and visitors from around the world.

Where History Comes Alive:

TANAPA's Cultural Heritage Sites

1. Isimila Stone Age Site – Iringa

One of Africa's richest archaeological landscapes, Isimila preserves Stone Age tools dating back hundreds of thousands of years. The site reveals early human ingenuity and technological development, set against dramatic natural pillars and gorges that enhance both its scientific and tourism value.



2. Dr. Livingstone Museum – Kigoma

Situated in historic Ujiji on the shores of Lake Tanganyika, this museum commemorates the famous 1871 meeting between Dr. David Livingstone and Henry Morton Stanley. It documents early exploration, missionary work and trade routes, reflecting East Africa's long-standing connections with the wider world.



3. Caravan Serai Slave Trade Museum – Bagamoyo

This site preserves the painful history of the East African slave trade. Enslaved Africans were once held here before being transported to the Middle East, India and beyond. The museum tells stories of suffering and resilience, while highlighting Bagamoyo's global significance within the African diaspora.



4. Mkwawa Museum – Kalenga, Iringa

A powerful symbol of resistance, this museum honors Chief Mkwawa of the Hehe people, who led one of the strongest resistances against German colonial rule. The site offers insight into pre-colonial leadership, military strategy and the roots of Tanzanian identity founded on courage and self-determination.



5. Nyerere Memorial House – Magomeni, Dar es Salaam

This modest house is where Mwalimu Julius K. Nyerere lived during the struggle for independence. Preserved with personal artifacts, photographs and documents, it tells the story of nationalism and the vision that shaped modern Tanzania.

Together, these five sites form a complete historical arc from early humanity, through slavery and resistance, to independence and nation building.



How TANAPA Protects These Stories

Under its expanded mandate, TANAPA is committed to conserving and sustainably managing Tanzania's cultural heritage through:

- Conservation of historic structures, artifacts and landscapes;
- Public education and cultural awareness programmes;
- Improved visitor facilities while maintaining authenticity;
- Strong community partnerships for shared benefits; and
- Promotion of cultural tourism alongside wildlife tourism.

These efforts aim to elevate cultural heritage conservation to national and international standards.

Despite progress, challenges remain:

- Environmental threats such as erosion and climate change;
- Limited resources for research, restoration and documentation;
- Low public awareness and risks of vandalism; and
- Unregulated or insensitive tourism practices.

With unwavering dedication, TANAPA joins hands with local and international partners to overcome these challenges, ensuring that every visitor can continue to experience Tanzania's cultural and natural treasures at their very best.



This commitment was recently demonstrated at the ICOM General Conference held in Rome in September 2025, where a collaborative paper on the conservation of Isimila Stone Age Site was presented and received notable recognition among contributions from over 120 member countries.





A Future Full of Possibilities

Cultural heritage holds immense potential to diversify Tanzania's tourism economy. Opportunities include:

- Strengthening interpretation and storytelling;
- Using modern exhibition and digital technologies;
- Expanding research partnerships;
- Encouraging domestic tourism and school visits; and
- Integrating cultural and wildlife experiences.

Innovation in these areas will position TANAPA's cultural sites as leading destinations for education, research and global heritage engagement.

Our Heritage, Our Identity: A Shared Responsibility

From early human origins at Isimila, to global encounters in Ujiji, the legacy of the slave trade in Bagamoyo, the resistance of the Hehe Kingdom in Kalenga and the rise of nationalism in Magomeni, TANAPA's cultural sites collectively tell the full story of Tanzania.

These are more than historic locations. They are national classrooms, cultural archives and vital tourism assets connecting Tanzanians and the world to the shared past.

Strengthening conservation, research and promotion ensures that future generations understand where we came from, the challenges we overcame and the values that shaped our nation.

TANAPA remains committed to safeguarding this heritage and elevating cultural tourism as a pillar of national development.

Why you should visit TANAPA Cultural Sites

Visiting these sites offers a connected journey through Tanzania's past:

- Isimila – Early humans and evolution;
- Ujiji – Global encounters and anti-slavery narratives;
- Bagamoyo – Slave trade and the African diaspora;
- Kalenga – Resistance and leadership; and
- Magomeni – Nationalism and independence.

Together, they provide a powerful and transformative learning experience; showcasing how Tanzania evolved from ancient origins into a proud, independent nation.

WHERE NATURE WINS!

TANAPA'S Journey to World Travel Awards Success

By *Jully Bede Lyimo*

Tanzania National Parks (TANAPA) continues to shine on the global stage, consistently bringing home prestigious honors such as the World Travel Awards. From being named *Africa's Leading National Park* to *Africa's Leading Tourist Attraction*, these accolades celebrate the unmatched beauty and conservation excellence within the country's 21 national parks. In this special feature, the Assistant Conservation Commissioner for Business Development at TANAPA, Jully Bede Lyimo opens up about the secrets behind these achievements and what they truly mean for Tanzania and the future of its parks.

Q: What is the World Travel Award?

The World Travel Awards are among the most prestigious recognitions in the global tourism

and travel industry. They celebrate excellence across all key sectors, from destinations and hotels to conservation agencies and tour operators. For us at TANAPA, being recognized through these awards means our efforts in protecting nature and promoting sustainable tourism are valued on the world stage.

Q. What does it take to be nominated?

"To be nominated, an organization must demonstrate outstanding performance, consistent quality and a strong reputation among peers, industry experts and travelers. For TANAPA, this has meant years of dedication to conservation, maintaining high standards in visitor services and ensuring that our parks remain accessible, safe and ecologically preserved. The nomination itself is a reflection of trust and recognition by the international community."

Q. TANAPA has won a number of these awards for years now. What has been the secret behind TANAPA's consistent success in winning the World Travel Awards?

TANAPA's success is built on a strong foundation of conservation commitment, dedicated staff, strategic partnerships and community engagement. We've maintained the integrity of our national parks while enhancing visitor experiences through improved infrastructure, professional guiding services and sustainable tourism practices. But most importantly, it's the natural beauty and ecological richness of our 21 national parks that speak for themselves. Our team works tirelessly to preserve these treasures for both present and future generations and this recognition reflects that hard work.

Q. What does this Awards mean to you as an organization?

This award is a great honor and a reaffirmation that Tanzania's national parks are world-class destinations. It boosts global confidence in our parks, inspires us to raise the bar even higher and reminds us that our conservation efforts are being seen and appreciated. For TANAPA, it's not just a trophy it's motivation. It strengthens our position in global tourism and highlights Tanzania as a premier destination for nature lovers, adventure seekers and conservation-minded travelers.



Tourism Events



TANAPA GO App Launching - Mikumi



Serengeti Safari Marathon - Saanane



Shangwe la Sikukuu na TANAPA - Katavi



Zanzibar International Trade Fair and Conference (ZITF)



Zanzibar International Trade Fair and Conference (ZITF)



New Year Eve - Mikumi

and Exhibitions



Tanzania Samia Connect - Arusha



Qatar International Exhibition for Travel & Tourism-Doha Qatar



"My Tanzania" European Roadshow - Germany, Austria, Slovenia and Italy



World Travel Market (WTM - London) - United Kingdom



Magical Kenya Travel Expo (MKTE)



The Tanzania Road Show held in Spain (Madrid, Barcelona and Sevilla)

MAHALE MOUNTAINS NATIONAL PARK

A Hidden Eden of Chimpanzees, Mountains & Untouched Wilderness

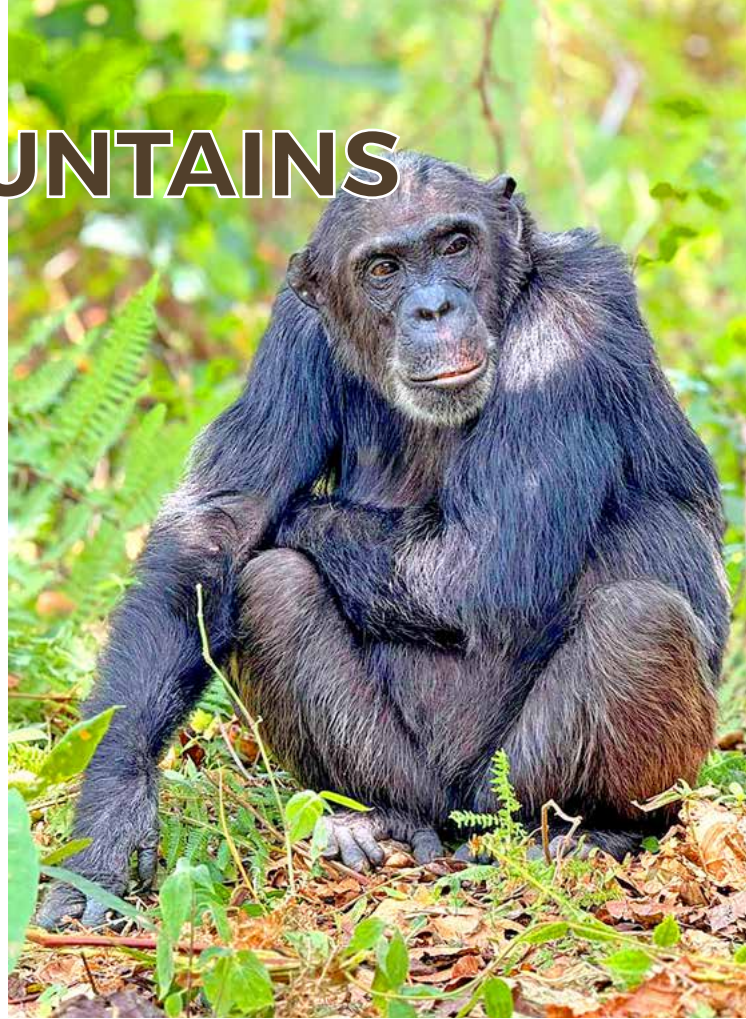
By Evance Elias Magomba

There are still places in Tanzania where wilderness feels ancient, intimate and profoundly untouched.

Mahale Mountains National Park is one of them. Rising dramatically from the crystal-clear waters of Lake Tanganyika, this remote sanctuary in western Tanzania offers a rare fusion of mountain, forest and lake; an experience that feels less like a safari and more like stepping into a living Eden.

The park takes its name from the majestic Mahale Mountain Range, crowned by Mount Nkungwe (2,462 metres).

These forested peaks soar straight from the lakeshore, cloaked in rainforest, bamboo thickets and high-altitude grasslands.



The result is a landscape unlike anywhere else in Tanzania: cool mountain breezes above, warm lake waters below and multiple ecosystems woven into a single, breathtaking setting.





Where Mountains Meet the Lake

Mahale's dramatic elevation and geology create a rare natural harmony. Lush tropical forests give way to misty mountain trails, while white sandy beaches fringe the deep-blue expanse of Lake Tanganyika.

Hiking routes wind through ancient trees and along ridgelines with sweeping views, rewarding visitors with both adventure and serenity.

This mountain-meets-lake scenery sets Mahale apart as one of Africa's most visually striking national parks and one of its least disturbed.

A Unique Home of the Wild Chimpanzees

Mahale is globally renowned as one of the finest places on Earth to observe wild chimpanzees.

More than 1,000 chimpanzees live within the park, including the famous M Group, which has been the subject of continuous research for over 60 years.

Another group, the Y Group, is currently undergoing the habituation process, strengthening Mahale's role in long-term conservation and scientific study.

Here, visitors can track and observe habituated chimpanzees on foot, an experience that is both emotional and deeply personal.

Watching these intelligent primates interact, communicate and move through the forest is often described as life-changing.

Unlike other chimpanzee destinations, Mahale's chimps inhabit dense rainforest climbing into misty mountains creating trekking experiences that feel immersive, dramatic and almost mythical.



Getting There: The Journey Adds to the Magic

Reaching Mahale is an adventure in itself, enhancing the sense of discovery.

- **By Road:** From Kigoma town, the park is approximately 220 kilometres (around six hours). From Mpanda via Mwese, the journey is about 199 kilometres (around five hours), mainly accessible during the dry season.
- **By Water:** Boats travel from Kigoma across Lake Tanganyika to Rukoma, Mgambo or Katumbi villages, where local boats or park-arranged transfers take visitors onward.
- **By Air:** Chartered flights from Arusha or Dar es Salaam land at Mahale Airstrip, just five kilometres from the park headquarters.

Each route reinforces Mahale's remoteness and its exclusivity.

Crystal-Clear Shores of Lake Tanganyika

Mahale borders Lake Tanganyika, the world's longest and second-deepest freshwater lake.

Its waters are astonishingly clear, inviting visitors to swim, snorkel, kayak or simply float beneath wide African skies.

Sunsets here are unforgettable, as golden light spills across the lake while forested mountains fade into silhouette.

The combination of sandy beaches and deep-blue waters gives Mahale the feel of a tropical island; yet one surrounded by wild forest alive with chimpanzees.

Exceptional Biodiversity

Beyond chimpanzees, Mahale is one of Africa's most biodiverse landscapes.

Wildlife includes red colobus monkeys, red-tailed monkeys, yellow baboons, forest antelopes, giant forest squirrels and elusive leopards.

Birdlife is equally impressive. With over 350 bird species, Mahale is a paradise for birdwatchers, hosting rare forest birds found nowhere else in Tanzania.

The flora is just as captivating: towering mahogany trees, emerald vines, wild orchids and extensive bamboo forests create a botanical world that feels untouched by time.



Cultural Roots of the Tongwe People

Mahale is not only a natural sanctuary but also a place of deep cultural meaning.

It is the ancestral homeland of the Tongwe people, who lived in harmony with these forests for centuries.

Their traditions, sacred sites and forest knowledge add cultural depth to the Mahale experience.

Visitors can learn about traditional fishing techniques, herbal medicine, forest rituals and ancestral stories reminding us that conservation is as much about people as it is about wildlife.

A Rare Sense of Exclusivity and Serenity

There are no game-drive convoys, no busy roads only forest trails, lakeshore paths and the quiet presence of wildlife.

This makes Mahale ideal for travelers seeking:

- Unspoiled nature;
- Meaningful wildlife encounters; and
- Peace, solitude and adventure.

It is often described as one of Africa's most romantic and serene safari destination.



A Place That Stays With You

Mahale Mountains National Park is where towering mountains meet deep-blue waters, where ancient forests shelter thriving chimpanzee families and where travelers reconnect with nature in its purest form.

Its remoteness, biodiversity, cultural heritage and breathtaking scenery make Mahale one of Tanzania's most unique and unforgettable destinations.

Whether you are a wildlife enthusiast, an adventurer, a photographer or simply a seeker of beauty and peace, Mahale promises an experience found nowhere else in the world.





Discover Maji Moto

NATURE'S HEALING HOT SPA IN RUAHA NATIONAL PARK, TANZANIA

By Dr. Marckysfarreny P. Rwezaula

Imagine sinking into warm, mineral-rich waters while the distant calls of wildlife echo across an untouched African wilderness.

Lions patrol ancient pathways, elephants move gracefully across vast plains and the land breathes with primal energy.

This is Ruaha National Park one of Africa's last great strongholds of raw nature and hidden within it lies a rare wellness treasure: Maji Moto, a natural geothermal hot spa unlike any other in Tanzania.

Located deep inside the park at latitude -8.03785 and longitude 34.50066, Maji Moto is a pristine hot spring long revered for its soothing warmth and restorative qualities.

Today, its naturally heated waters are carefully moderated into safe, inviting pools, allowing visitors to soak for up to 15 minutes of pure, rejuvenating bliss a mindful pause amid one of the world's most dramatic wildlife landscapes.

What Makes Maji Moto Special?

Maji Moto meaning "hot water" in Swahili is a geothermally heated spring whose waters are naturally filtered through underground rock formations.

Along this subterranean journey, the water absorbs essential minerals before emerging at the surface, warm and revitalizing.

To ensure that this exceptional wellness experience is both scientifically sound and responsibly managed, the Department of Ecology at Ruaha National Park undertook comprehensive laboratory testing of the hot spring water.

The initiative was led by Mr. Nobert Wanzara, who coordinated the careful collection and submission of samples for analysis.

The results confirmed the presence of naturally occurring minerals known to support human wellbeing validating Maji Moto not only as a unique attraction, but also as a protected natural resource of genuine therapeutic value.

Laboratory analysis confirmed the presence of the following beneficial minerals:

- Calcium: 120.6 mg/L
- Magnesium: 32.5 mg/L
- Sodium: 120.3 mg/L
- Sulphate: 144 mg/L

These concentrations elevate Maji Moto from a scenic curiosity to a science-backed wellness destination, where nature and human health intersect harmoniously.

Health and Wellness Benefits Backed by Science

For centuries, mineral hot springs around the world have been used for therapeutic and restorative purposes.

Modern research continues to affirm their value, particularly when combined with tranquil natural surroundings.

Relaxation and Stress Relief

The warmth of the mineral water, coupled with Ruaha's profound silence and expansive vistas, encourages deep relaxation helping reduce stress hormones and restore mental balance.

Muscle and Joint Comfort

Magnesium-rich waters are widely associated with muscle relaxation and may help ease tension and minor discomfort, especially

after long safari drives or guided walking excursions.

Skin and Circulatory Benefits

Calcium and sulphate are linked to improved skin barrier function and enhanced circulation, leaving visitors with a refreshed, revitalized feeling.

A Holistic Wellness Experience

Buoyancy, warmth, mineral richness, and breathtaking views of African plains combine to create a deeply immersive experience one that nurtures body, mind and spirit all at once.

Why Visit Ruaha National Park?

Ruaha is among Tanzania's most extraordinary and least crowded national parks.

Shaped by the Great Rift Valley, its dramatic terrain features rugged gorges, ancient baobabs, rocky kopjes and sweeping savannahs.

The park supports the largest elephant population in East Africa, along with lions, leopards, wild dogs, and more than 570 bird species, making it a paradise for wildlife enthusiasts and photographers alike.

Adding a visit to Maji Moto transforms a traditional safari into something truly transformational.

After a day of tracking wildlife or exploring the landscape, soaking in warm, mineral-rich waters beneath an open African sky becomes a moment of profound connection with nature and with oneself.

A Sustainable Sanctuary for Wellness

Sustainability lies at the heart of Maji Moto's management.

Under the guidance of the Department of Ecology, visitor access is carefully regulated to protect both human safety and environmental integrity.

Time-limited soaks and ongoing monitoring ensure that the hot spring remains regenerative, pristine and available for future generations.

This balanced approach positions Ruaha National Park as a model for responsible wellness tourism, where conservation and visitor experience enhance one another rather than compete.

Your Next Adventure Awaits

Whether you are a wellness traveler in search of natural spa experiences, a safari enthusiast craving something extraordinary, or a photographer chasing golden light across the African plains, Maji Moto offers an experience found nowhere else.

Come for the Wildlife . Stay for the Warmth . Leave changed Forever



A LANDSCAPE

WITH ITS OWN SIGNATURE

Discovering Ruaha National Park



By Evance Elias Magomba

There are places where nature performs on a grand stage and then there are places like Ruaha National Park, where the wild feels deeply personal.

Vast, quiet and profoundly authentic, Ruaha is a destination for travelers who seek space, raw beauty and a sense of discovery that unfolds slowly, mile by mile.

Stretching across central Tanzania, Ruaha is shaped by the life-giving Great Ruaha River, which cuts through a dramatic landscape of open savanna, ancient baobabs, rocky escarpments and dense miombo woodland.

This diversity creates one of Africa's most distinctive ecosystems and a park with a character entirely its own.

Where Wildlife Moves Freely

Ruaha is celebrated for its wildlife richness and scale.

It supports one of the largest elephant populations in East Africa, with herds often seen moving through dry riverbeds or silhouetted against golden plains.

Lions are a defining presence here, frequently encountered and often in impressive numbers, alongside leopards, cheetahs and spotted hyenas.

What truly sets Ruaha apart is its rare species

Roan and sable antelope, greater kudu, and other less commonly seen animals thrive here, thanks to the park's blend of eastern and southern African wildlife zones.





For seasoned safari-goers, Ruaha offers sightings that feel both rewarding and refreshingly different.

The Luxury of Space and Silence

In Ruaha, space is the ultimate luxury. The park is immense, and the sense of openness is immediate. Game drives often stretch for hours without encountering another vehicle.

The silence is broken only by the call of birds, the rustle of grass or the distant trumpet of elephants.

This solitude creates an experience that feels unfiltered where the rhythm of the day is set by nature, not schedules.

Sunrise and sunset here are not spectacles to be rushed, but moments to absorb, as the light shifts across an endless horizon.

Strengthening Access Without Losing Identity

While Ruaha's soul remains untouched, thoughtful investments are strengthening the park's foundation.

Key road networks inside and around the park are being upgraded, making travel smoother and safer while supporting conservation patrols and improving access during both dry and wet seasons.

At the same time, local airstrips are being enhanced, opening Ruaha to more direct flights from major tourism hubs.

Reduced travel time makes the park more accessible to international visitors, while also supporting emergency response, conservation logistics and high-end tourism operations.

A New Chapter for Responsible Tourism

With improved infrastructure comes opportunity but in Ruaha, opportunity is guided by responsibility.

The park is emerging as a prime destination for eco-lodges, community-based tourism initiatives, research facilities and conservation-focused services.

Investors and operators are drawn by the chance to develop experiences that respect the land while creating meaningful benefits for surrounding communities.

Jobs, skills development and long-term economic growth are increasingly tied to the park's success, ensuring that conservation and livelihoods move forward together.

Wild at Heart, Strong for the Future

These developments are not about changing Ruaha. They are about protecting what makes it extraordinary.

Better access means stronger conservation, increased protection and greater appreciation of the landscape.

Responsible investment ensures that the people living around Ruaha share in its value and remain partners in its preservation.

Ruaha National Park stands today as one of Tanzania's most remarkable natural areas defined by its wildlife, its silence, its immense scale and a carefully managed path toward the future.

For travelers seeking a safari that feels expansive, intimate and timeless, Ruaha is not just a destination. It is a signature written in earth, light and wild freedom.



Safari Quest

WORD CROSS PUZZLE

B	I	R	D	E	Y	K	A	D	N	A	B	I	K	I	N	G	A	N	G	I	R	E
E	N	G	E	T	I	M	W	A	L	I	M	U	N	Y	E	L	N	I	O	N	A	U
W	A	L	K	I	N	G	S	A	F	A	R	I	Z	R	A	A	T	A	R	A	N	B
E	T	A	R	A	N	I	O	N	E	S	E	P	I	P	B	O	N	D	O	W	E	O
A	M	K	O	I	B	A	N	D	R	E	M	A	M	I	K	U	M	M	I	E	G	N
V	K	E	I	S	E	R	E	N	G	E	T	I	S	A	F	A	R	S	O	A	O	M
A	A	M	K	I	N	G	S	A	F	A	R	K	H	I	P	P	O	E	L	V	O	K
G	Z	A	I	M	H	I	P	P	O	T	I	M	S	E	S	R	S	R	K	E	D	A
N	Z	N	D	P	I	M	P	A	L	D	K	I	N	G	D	U	B	E	K	R	A	W
E	S	Y	E	A	P	O	U	M	K	O	M	A	Z	K	O	B	I	N	O	B	L	A
L	I	A	N	L	P	A	M	I	K	U	M	O	I	H	O	O	R	G	N	I	D	M
A	O	R	U	B	O	N	D	D	O	Z	O	D	E	M	G	N	D	G	M	R	R	U
K	M	A	Z	O	T	A	R	A	N	G	I	R	E	L	K	D	N	T	K	D	J	F
M	I	K	U	N	A	L	E	N	G	A	E	J	A	L	A	O	E	I	W	J	A	E
U	K	A	B	D	M	K	O	M	A	R	I	A	S	A	L	O	M	D	A	A	N	B
E	R	O	L	O	U	D	Z	U	E	G	W	N	E	P	E	U	W	Z	M	N	E	R
S	B		M	U	S	E	U	Y	M	M	F	E	B	M	K	D	A	U	I	E	G	U
U	G	L	A	L	I	O	N	Y	E	R	E	G	L	I	O	Z	L	E	K	G	E	A
M	L	O	N	A	E	U	D	Z	U	N	G	O	M	W	A	U	Y	G	U	O	R	R
A	N	E	Y	K	M	K	O	M	Z	I	A	O	I	K	I	N	E	W	M	B	I	Y
W	K	I	A	I	A	L	L	D	I	K	I	D	K	H	O	G	R	A	E	A	H	A
A	L	N	L	A	K	E	M	A	N	Y	A	A	U	I	Z	W	E	F	E	O	R	U
W	A	A	B	A	O	B	A	B	I	R	D	L	M	P	I	A	Z	I	Y	B		R
K	W	A	L	K	S	A	F	A	R	R	I	L	B	O	A	T	S	A	F	A	R	I
M	I	K	U	M	A	W	R	E	Y	K	A	D	N	A	B	I	B	A	N	D	A	K

- A. MKWAWA MUSEUM KALENGA
- B. HIPPOPOTAMUS
- C. WEAVER BIRD
- D. IBANDA-KYERWA
- E. DR JANE GOODALL
- 6. IMPALA
- F. SERENGETI
- G. LAKE MANYARA
- H. UDZUNGWA
- I. MWALIMU NYERERE HOUSE
- J. RUBONDO
- K. MKOMAZI
- L. DIKDIK
- M. A BAOBAB
- N. LION
- O. BOAT SAFARI
- P. TARANGIRE
- Q. WALKING SAFARI
- R. MIKUMI
- S. FEBRUARY

- Small bird in Tanzania National Parks known for its nest-weaving skills ☐
- Renowned for her groundbreaking research on Chimpanzees in Gombe National Park in 1960 ☐
- World's Leading National Park 2025 by World Travel Awards ☐
- A national Park in Tanzania known for lion behavior of resting in trees ☐
- A house in Dar es salaam where one can explore the political journey of Tanzania's founding father ☐
- A park where chimpanzee live alongside Lake Victoria ☐
- Considered Africa's most dangerous animal ☐
- An antelope known to "freeze" completely still when sensing danger rather than immediately fleeing? ☐
- Elephants' paradise in Tanzania ☐

- A place one can explore the legacy of Chief Mkwawa, whose skull was taken by German colonial forces ☐
- Tourist activity that give you a true feel of Nature ☐
- Most accessible National Parks from Dar es salaam ☐
- A Park in Tanzania with the highest waterfall? ☐
- An animal in the Tanzania National Park Logo ☐
- Calving month in southern Serengeti plains ☐
- Exploring Park by boats ☐
- A park where you can see three countries ☐
- Only cat to live in groups ☐
- A park with dramatic backdrops of pare and Usambara Mountains ☐
- Nicknamed "Upside down" tree ☐

EAGLE'S FAIRY

Tale



Eaglets Story

KiDS @ WILD



Eva the Eaglet and
the Quiet Night Sky of

*Katavi National
Park*

Kids at Wild

As the sun slowly went to sleep behind the wide plains of Katavi National Park, called Paradise, the land became calm and quiet.

Soft winds moved through the grass and tiny stars began to shine in the dark sky.

High up in a tall tree, there was a big eagle nest.

In that nest lived a wise old eagle named Kingu.

Kingu was the grandfather of the eagle family. Every night, he watched over Katavi Paradise and whispered gentle stories to the moon and stars.

One warm morning, Mama Eagle laid two eggs in the nest.

She kept them safe and warm, day and night.

After some time, crack... crack... the eggs slowly opened.

Two tiny eaglets were born.

One was small and quiet.

The other was strong and bright-eyed.

The stronger eaglet was named Eva.

Eva was very hungry and wanted Mama Eagle's care.

In the wild, animals must be strong to survive.

Eva pushed her sibling aside to reach the food first.

This is how nature sometimes works, and soon, Eva was the only baby left in the nest.



Kids at Wild

Mama Eagle loved Eva very much.
She fed her gently, covered her with her warm wings at night, and kept her safe from the cool air of Paradise.
When darkness came, she made soft sounds to help Eva fall asleep.

Grandfather Kingu watched with kind eyes.
“Rest well, little Eva,” he said softly.
“You were born to fly over Katavi Paradise.”

As days passed, Eva grew bigger and stronger.
She practiced flapping her wings as the evening breeze moved across the plains below.
Sometimes she felt sleepy, and Mama Eagle pulled her close.

At night, Kingu told Eva bedtime stories.
He spoke about rivers shining like silver, green grasslands stretching far and wide, and animals resting peacefully.
He told her about elephants walking slowly, hippos sleeping in the water, and birds dreaming in the trees of Katavi Paradise.

One quiet night, Eva looked at the sky and asked,
“Grandfather Kingu, will I fly across Paradise one day?”
Kingu smiled and answered,
“Yes, little one. Katavi National Park—our Paradise—will be your sky.”

Soon, Eva made her first gentle flight.
She flew higher and higher over the beautiful Paradise below.
The moon followed her, and the stars twinkled softly.

Kids at Wild

When Eva returned to the nest, tired but happy, Mama Eagle wrapped her in her wings.

Kingu whispered,

“Sleep now, brave Eva. Tomorrow brings new adventures.”

Eva closed her eyes, listening to the peaceful sounds of the wild.

She dreamed of flying free, protecting her home, and welcoming children from all over the world to visit Katavi National Park—Paradise of the Wild.

Under the African night sky, the eagle family slept peacefully.

GOOD NIGHT

EVA

Written and Edited by

BARAKA VENANT SERAPION





Download the
TANAPA Go App now on
Play Store and App Store



THE CONSERVATION COMMISSIONER
TANZANIA NATIONAL PARKS
P. O. Box 3134, PostCode 23106, **ARUSHA - TANZANIA**

T: +255 (27) 297 040, +255 (27) 297 0405

F: +255 (27) 297 0408

info@tanzaniaparks.go.tz

www.tanzaniaparks.go.tz



Sustainable Conservation for Development